

EQUIPMENT LIST FOR AREAS SHOWN								
Pole				Luminaires				
QTY	LOCATION	SIZE	GRADE ELEVATION	MOUNTING HEIGHT	LAMP TYPE	QTY/POLE	THIS GRID	OTHER GRIDS
4	M1-M4	12.2m	-	12.2m	1500W MZ	1	1	0
4	<b>TOTALS</b>					4	4	0



GUARANTEED PERFORMANCE

### ILLUMINATION SUMMARY

**MUGA**  
 Hemel Stags  
 Hemel Hempstead,  
**MUGA**  
 · Size: 48m x 32m  
 · Grid Spacing = 5.0m x 5.0m  
 · Values given at 1.0m above grade  
  
 · Luminaire Type: Green Generation  
 · Rated Lamp Life: 5000 hours  
 · Avg Lumens/Lamp: 134,000

#### CONSTANT ILLUMINATION HORIZONTAL LUX

Entire Grid	
No. of Target Points:	54
<b>Average:</b>	<b>231.78</b>
Maximum:	300
Minimum:	139
<b>Min/Avg:</b>	<b>0.60</b>
Min/Max:	0.46
UG (Adjacent Pts):	2.17
CV:	0
Average Lamp Tilt Factor:	1.000
Number of Luminaires:	4
Avg KW over 5000 hours:	6.26
Max KW:	6.8

**Guaranteed Performance:** The CONSTANT ILLUMINATION described above is guaranteed for the rated life of the lamp.

**Field Measurements:** Averages shall be +/-10% in accordance with IESNA RP-6-01 and CIBSE LG4. Individual measurements may vary from computer predictions.

**Electrical System Requirements:** Refer to Amperage Draw Chart and/or the "Musco Control System Summary" for electrical sizing.

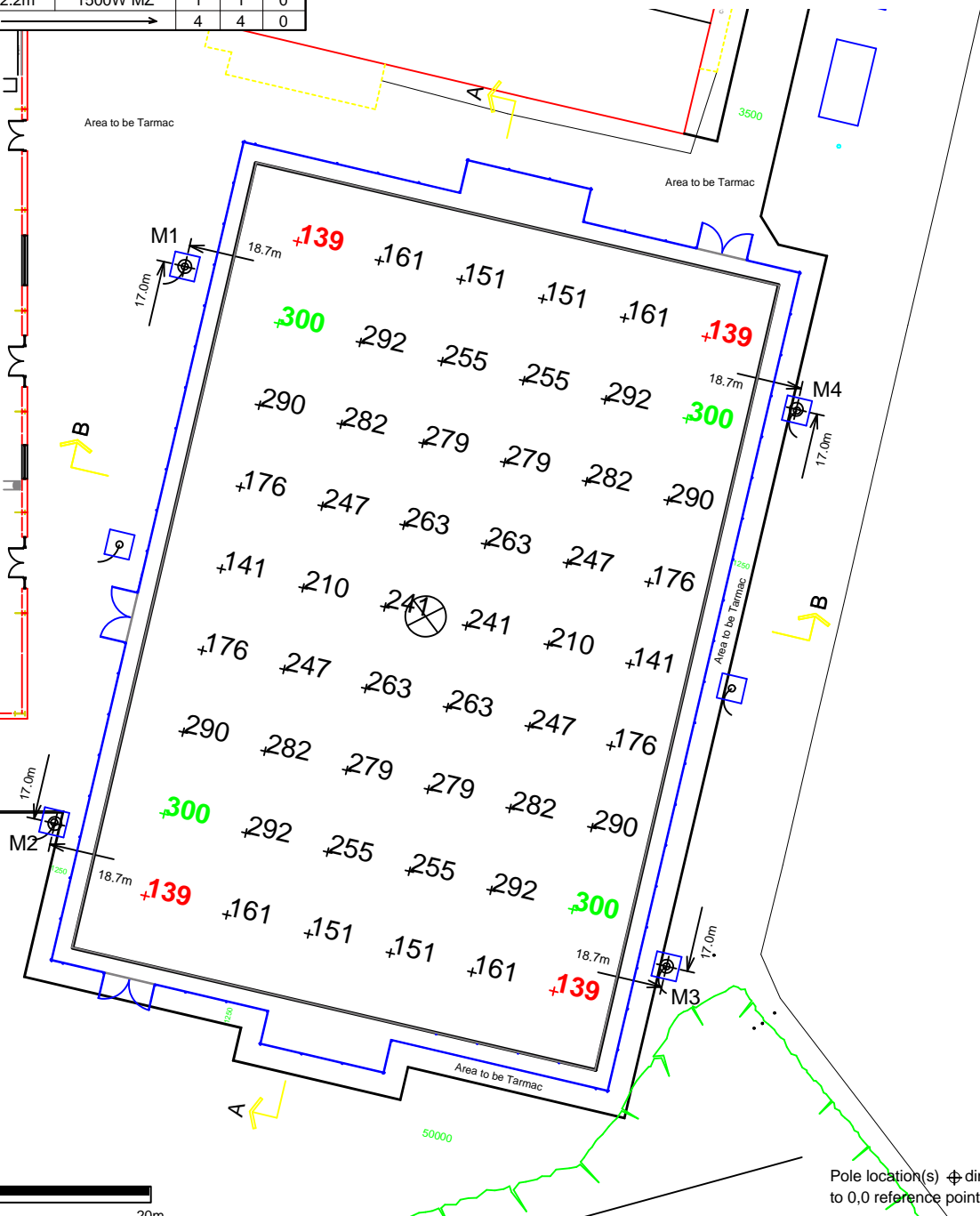
**Installation Requirements:** Results assume +/- 3% nominal voltage at line side of the ballast and structures located within 3 feet (1m) of design locations.

By: Mbelloma

File #: 120745A

Date: 24-Jan-08

Not to be reproduced in whole or part without the written consent of Musco Lighting. ©1981, 2008 Musco Lighting



SCALE 1: 400



Pole location(s) ⚡ dimensions are relative to 0,0 reference point(s) ⊗

EQUIPMENT LIST FOR AREAS SHOWN								
Pole			Luminaires					
QTY	LOCATION	SIZE	GRADE ELEVATION	MOUNTING HEIGHT	LAMP TYPE	QTY/POLE	THIS GRID	OTHER GRIDS
4	R1-R4	18.3m	-	18.3m	1500W MZ	9	9	0
4	← TOTALS →					36	36	0



GUARANTEED PERFORMANCE

### ILLUMINATION SUMMARY

Rugby League  
Hemel Stags  
Hemel Hempstead,

- Rugby League
- Size: 102m x 55m
- Grid Spacing = 10.0m x 10.0m
- Values given at 1.0m above grade

- Luminaire Type: Green Generation
- Rated Lamp Life: 5000 hours
- Avg Lumens/Lamp: 134,000

#### CONSTANT ILLUMINATION HORIZONTAL LUX

Entire Grid	
No. of Target Points:	54
Average:	506.77
Maximum:	752
Minimum:	356
Min/Avg:	0.70
Min/Max:	0.47
UG (Adjacent Pts):	1.54
CV:	0

Average Lamp Tilt Factor:	1.000
Number of Luminaires:	36
Avg KW over 5000 hours:	56.3
Max KW:	61.2

**Guaranteed Performance:** The CONSTANT ILLUMINATION described above is guaranteed for the rated life of the lamp.

**Field Measurements:** Averages shall be +/-10% in accordance with IESNA RP-6-01 and CIBSE LG4. Individual measurements may vary from computer predictions.

**Electrical System Requirements:** Refer to Amperage Draw Chart and/or the "Musco Control System Summary" for electrical sizing.

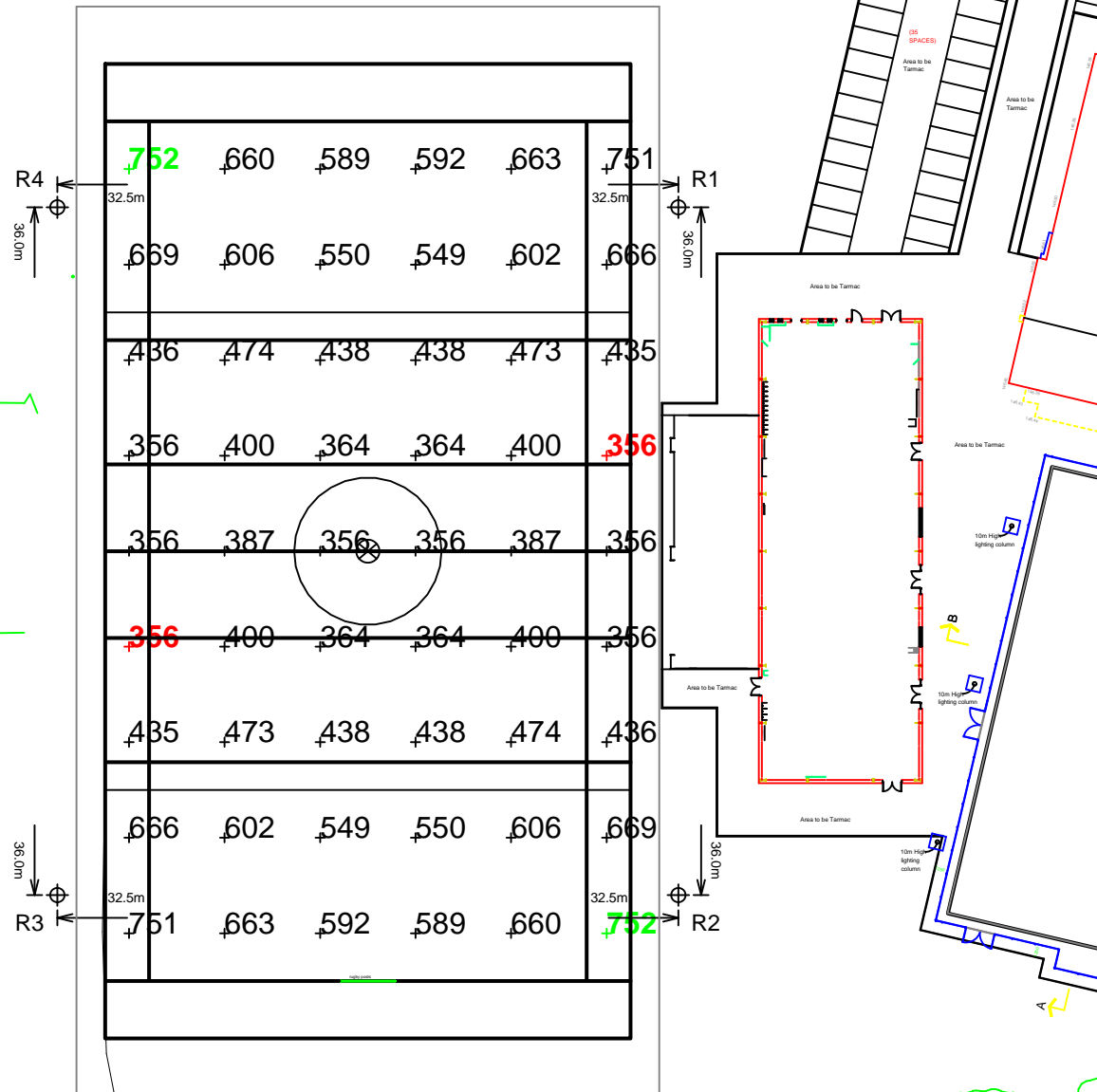
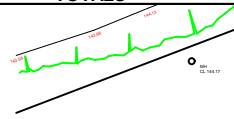
**Installation Requirements:** Results assume +/- 3% nominal voltage at line side of the ballast and structures located within 3 feet (1m) of design locations.

By: Mbelloma

File #: 120745A

Date: 24-Jan-08

Not to be reproduced in whole or part without the written consent of Musco Lighting. ©1981, 2008 Musco Lighting



SCALE 1: 750



Pole location(s) Ⓢ dimensions are relative to 0,0 reference point(s) ⊗

EQUIPMENT LIST FOR AREAS SHOWN								
Pole			Luminaires					
QTY	LOCATION	SIZE	GRADE ELEVATION	MOUNTING HEIGHT	LAMP TYPE	QTY/POLE	THIS GRID	OTHER GRIDS
4	R1-R4	18.3m	-	18.3m	1500W MZ	9	9	0
4	← TOTALS →					36	36	0



GUARANTEED PERFORMANCE

### ILLUMINATION SUMMARY

Rugby League - Try Area  
Hemel Stags  
Hemel Hempstead,

Rugby League - Try Area  
· Size: 6m Try Area  
· Grid Spacing = 10.0m x 10.0m  
· Values given at 1.0m above grade

· Luminaire Type: Green Generation  
· Rated Lamp Life: 5000 hours  
· Avg Lumens/Lamp: 134,000

#### CONSTANT ILLUMINATION HORIZONTAL LUX

Entire Grid	
No. of Target Points:	12
Average:	442.02
Maximum:	502
Minimum:	405
Min/Avg:	0.92
Min/Max:	0.81
UG (Adjacent Pts):	1.20
CV:	0

Average Lamp Tilt Factor:	1.000
Number of Luminaires:	36
Avg KW over 5000 hours:	56.3
Max KW:	61.2

**Guaranteed Performance:** The CONSTANT ILLUMINATION described above is guaranteed for the rated life of the lamp.

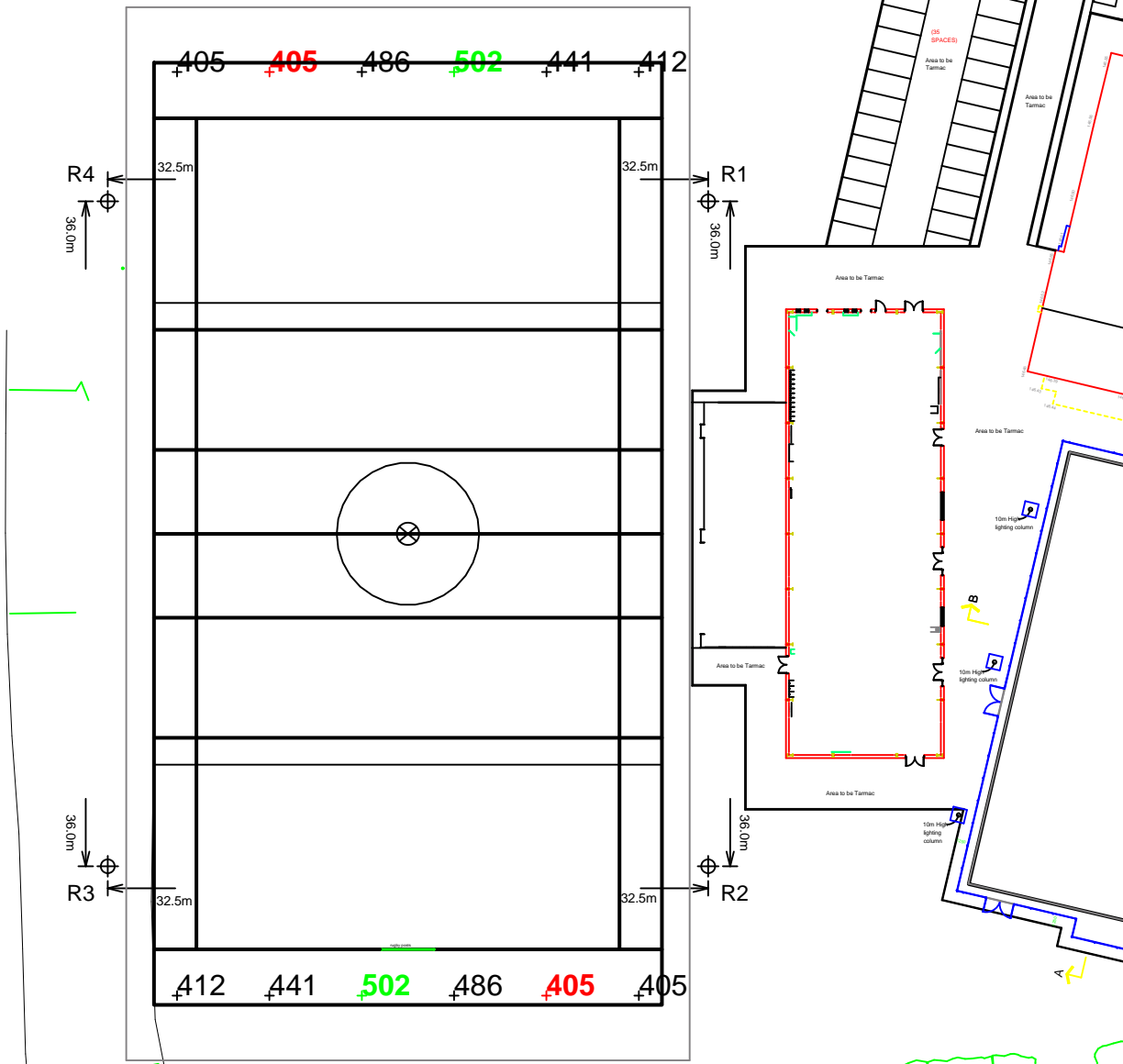
**Field Measurements:** Averages shall be +/-10% in accordance with IESNA RP-6-01 and CIBSE LG4. Individual measurements may vary from computer predictions.

**Electrical System Requirements:** Refer to Amperage Draw Chart and/or the "Musco Control System Summary" for electrical sizing.

**Installation Requirements:** Results assume +/- 3% nominal voltage at line side of the ballast and structures located within 3 feet (1m) of design locations.

By: Mbelloma  
File #: 120745A  
Date: 24-Jan-08

Not to be reproduced in whole or part without the written consent of Musco Lighting. ©1981, 2008 Musco Lighting

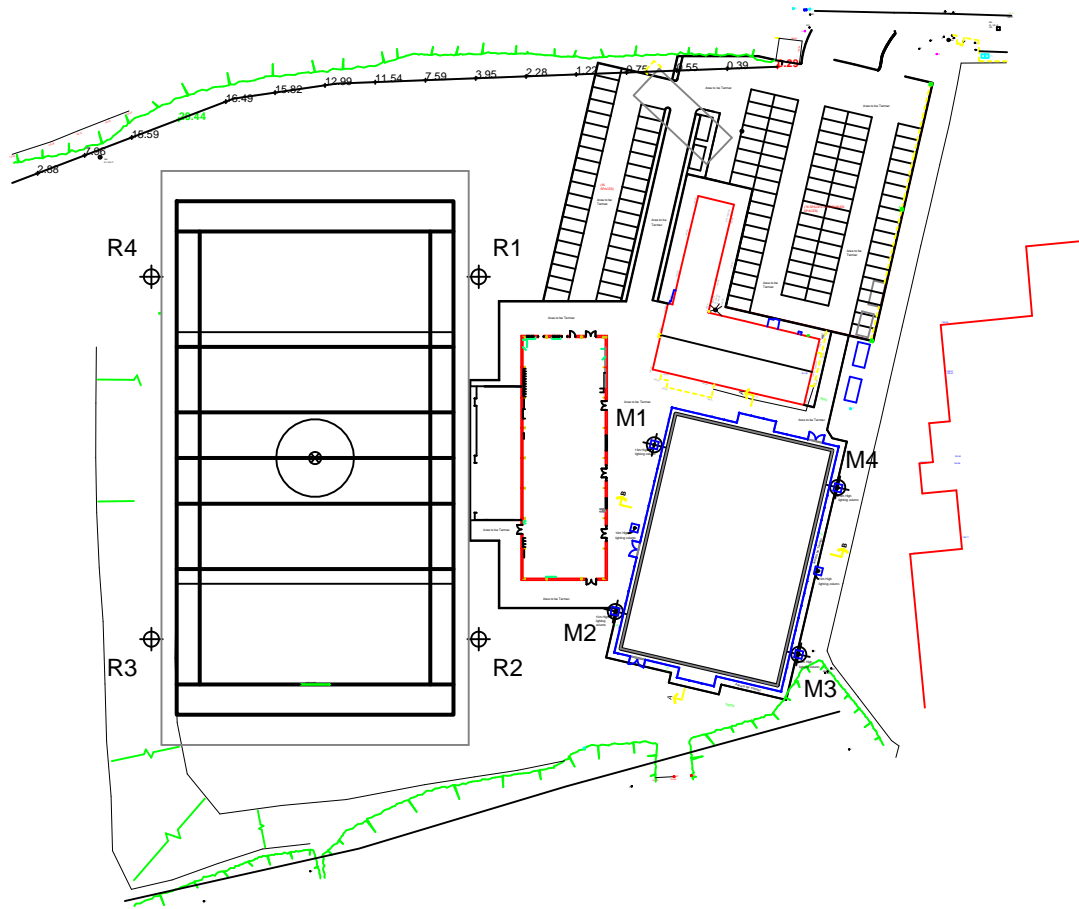


SCALE 1: 750



Pole location(s) Ⓢ dimensions are relative to 0,0 reference point(s) ⊗

EQUIPMENT LIST FOR AREAS SHOWN								
Pole			Luminaires					
QTY	LOCATION	SIZE	GRADE ELEVATION	MOUNTING HEIGHT	LAMP TYPE	QTY/POLE	THIS GRID	OTHER GRIDS
4	M1-M4	12.2m	-	12.2m	1500W MZ	1	1	0
4	R1-R4	18.3m	-	18.3m	1500W MZ	9	9	0
8	← TOTALS →					40	40	0



GUARANTEED PERFORMANCE

### ILLUMINATION SUMMARY

**SPILL NORTH**  
 Hemel Stags  
 Hemel Hempstead,  
**SPILL NORTH**  
 - Grid Spacing = 10.0m  
 - Values given at 1.0m above grade  
 - Luminaire Type: Green Generation  
 - Rated Lamp Life: 5000 hours  
 - Avg Lumens/Lamp: 134,000

CONSTANT ILLUMINATION HORIZONTAL LUX	
Entire Grid	
No. of Target Points:	16
Average:	7.5442
Maximum:	20.44
Minimum:	0.29
Average Lamp Tilt Factor:	1.000
Number of Luminaires:	40
Avg KW over 5000 hours:	62.56
Max KW:	68.0

**Guaranteed Performance:** The CONSTANT ILLUMINATION described above is guaranteed for the rated life of the lamp.

**Field Measurements:** Averages shall be +/-10% in accordance with IESNA RP-6-01 and CIBSE LG4. Individual measurements may vary from computer predictions.

**Electrical System Requirements:** Refer to Amperage Draw Chart and/or the "Musco Control System Summary" for electrical sizing.

**Installation Requirements:** Results assume +/- 3% nominal voltage at line side of the ballast and structures located within 3 feet (1m) of design locations.

SCALE 1: 1500



Pole location(s) ⊕ dimensions are relative to 0,0 reference point(s) ⊗

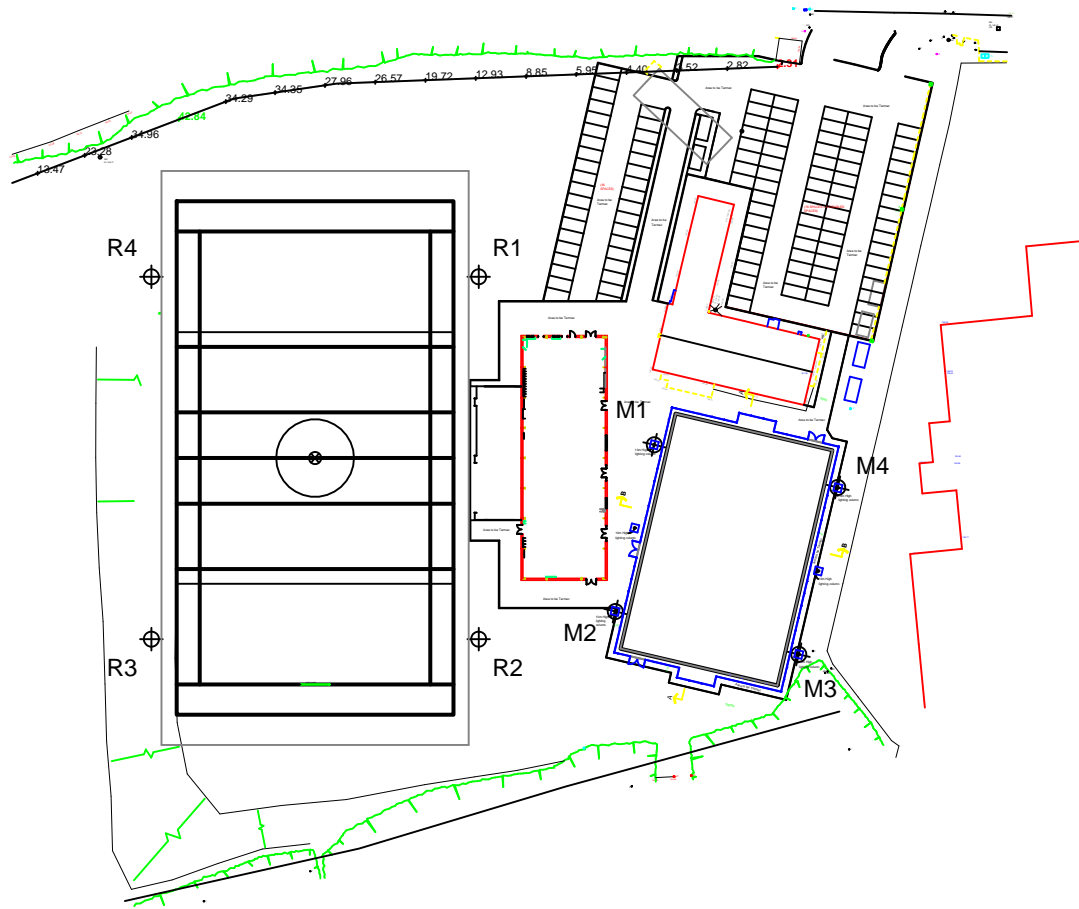
By: Mbelloma

File #: 120745A

Date: 24-Jan-08

Not to be reproduced in whole or part without the written consent of Musco Lighting. ©1981, 2008 Musco Lighting

EQUIPMENT LIST FOR AREAS SHOWN								
Pole				Luminaires				
QTY	LOCATION	SIZE	GRADE ELEVATION	MOUNTING HEIGHT	LAMP TYPE	QTY/POLE	THIS GRID	OTHER GRIDS
4	M1-M4	12.2m	-	12.2m	1500W MZ	1	1	0
4	R1-R4	18.3m	-	18.3m	1500W MZ	9	9	0
8	← TOTALS →					40	40	0



GUARANTEED PERFORMANCE

### ILLUMINATION SUMMARY

#### SPILL NORTH

Hemel Stags  
Hemel Hempstead,

#### SPILL NORTH

- Grid Spacing = 10.0m
- Values given at 1.0m above grade

- Luminaire Type: Green Generation
- Rated Lamp Life: 5000 hours
- Avg Lumens/Lamp: 134,000

#### CONSTANT ILLUMINATION MAX VERTICAL LUX

Entire Grid	
No. of Target Points:	16
Average:	18.6394
Maximum:	42.84
Minimum:	2.31

Average Lamp Tilt Factor:	1.000
Number of Luminaires:	40
Avg KW over 5000 hours:	62.56
Max KW:	68.0

**Guaranteed Performance:** The CONSTANT ILLUMINATION described above is guaranteed for the rated life of the lamp.

**Field Measurements:** Averages shall be +/-10% in accordance with IESNA RP-6-01 and CIBSE LG4. Individual measurements may vary from computer predictions.

**Electrical System Requirements:** Refer to Amperage Draw Chart and/or the "Musco Control System Summary" for electrical sizing.

**Installation Requirements:** Results assume +/- 3% nominal voltage at line side of the ballast and structures located within 3 feet (1m) of design locations.

SCALE 1: 1500



Pole location(s) ⊕ dimensions are relative to 0,0 reference point(s) ⊗

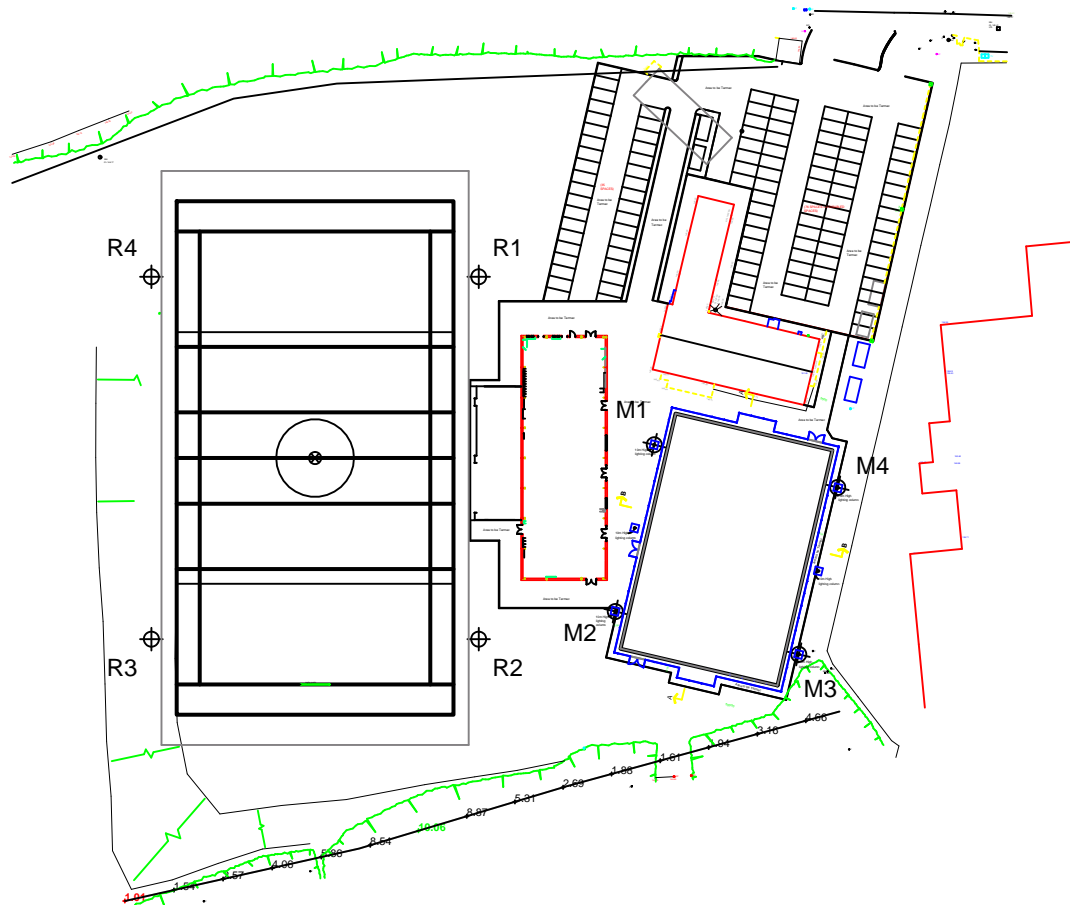
By: Mbelloma

File #: 120745A

Date: 24-Jan-08

Not to be reproduced in whole or part without the written consent of Musco Lighting. ©1981, 2008 Musco Lighting

EQUIPMENT LIST FOR AREAS SHOWN								
Pole			Luminaires					
QTY	LOCATION	SIZE	GRADE ELEVATION	MOUNTING HEIGHT	LAMP TYPE	QTY/POLE	THIS GRID	OTHER GRIDS
4	M1-M4	12.2m	-	12.2m	1500W MZ	1	1	0
4	R1-R4	18.3m	-	18.3m	1500W MZ	9	9	0
8	← TOTALS →					40	40	0



GUARANTEED PERFORMANCE

### ILLUMINATION SUMMARY

#### SPILL SOUTH

Hemel Stags  
Hemel Hempstead,

#### SPILL SOUTH

- Grid Spacing = 10.0m
- Values given at 1.0m above grade

- Luminaire Type: Green Generation
- Rated Lamp Life: 5000 hours
- Avg Lumens/Lamp: 134,000

#### CONSTANT ILLUMINATION HORIZONTAL LUX

Entire Grid	
No. of Target Points:	15
Average:	4.2496
Maximum:	10.06
Minimum:	1.01

Average Lamp Tilt Factor:	1.000
Number of Luminaires:	40
Avg KW over 5000 hours:	62.56
Max KW:	68.0

**Guaranteed Performance:** The CONSTANT ILLUMINATION described above is guaranteed for the rated life of the lamp.

**Field Measurements:** Averages shall be +/-10% in accordance with IESNA RP-6-01 and CIBSE LG4. Individual measurements may vary from computer predictions.

**Electrical System Requirements:** Refer to Amperage Draw Chart and/or the "Musco Control System Summary" for electrical sizing.

**Installation Requirements:** Results assume +/- 3% nominal voltage at line side of the ballast and structures located within 3 feet (1m) of design locations.

SCALE 1: 1500



Pole location(s) ⊕ dimensions are relative to 0,0 reference point(s) ⊗

By: Mbelloma

File #: 120745A

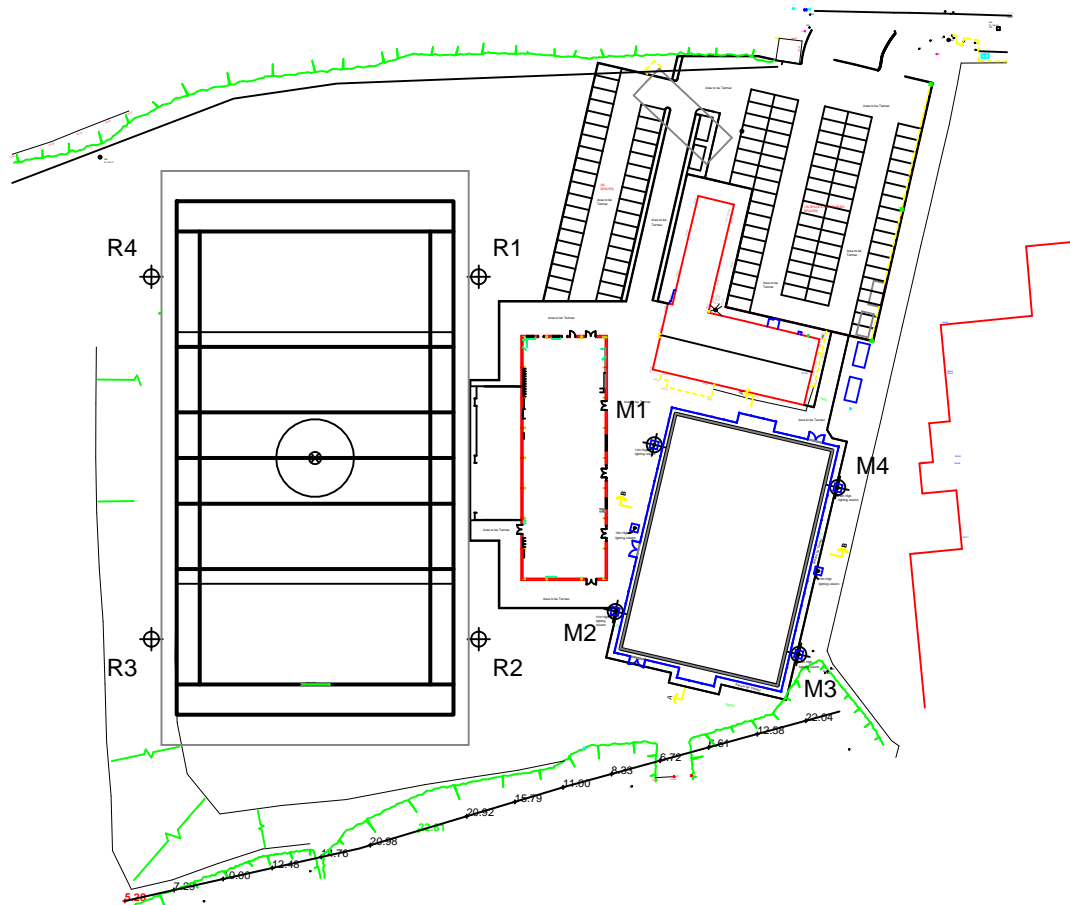
Date: 24-Jan-08

Not to be reproduced in whole or part without the written consent of Musco Lighting. ©1981, 2008 Musco Lighting

EQUIPMENT LIST FOR AREAS SHOWN								
Pole			Luminaires					
QTY	LOCATION	SIZE	GRADE ELEVATION	MOUNTING HEIGHT	LAMP TYPE	QTY/POLE	THIS GRID	OTHER GRIDS
4	M1-M4	12.2m	-	12.2m	1500W MZ	1	1	0
4	R1-R4	18.3m	-	18.3m	1500W MZ	9	9	0
8	← TOTALS →					40	40	0



GUARANTEED PERFORMANCE



### ILLUMINATION SUMMARY

#### SPILL SOUTH

Hemel Stags  
Hemel Hempstead,

#### SPILL SOUTH

- Grid Spacing = 10.0m
- Values given at 1.0m above grade

- Luminaire Type: Green Generation
- Rated Lamp Life: 5000 hours
- Avg Lumens/Lamp: 134,000

#### CONSTANT ILLUMINATION MAX VERTICAL LUX

Entire Grid	
No. of Target Points:	15
Average:	13.1737
Maximum:	22.81
Minimum:	5.28

Average Lamp Tilt Factor:	1.000
Number of Luminaires:	40
Avg KW over 5000 hours:	62.56
Max KW:	68.0

**Guaranteed Performance:** The CONSTANT ILLUMINATION described above is guaranteed for the rated life of the lamp.

**Field Measurements:** Averages shall be +/-10% in accordance with IESNA RP-6-01 and CIBSE LG4. Individual measurements may vary from computer predictions.

**Electrical System Requirements:** Refer to Amperage Draw Chart and/or the "Musco Control System Summary" for electrical sizing.

**Installation Requirements:** Results assume +/- 3% nominal voltage at line side of the ballast and structures located within 3 feet (1m) of design locations.

SCALE 1: 1500



Pole location(s) ⊕ dimensions are relative to 0,0 reference point(s) ⊗

By: Mbelloma

File #: 120745A

Date: 24-Jan-08

Not to be reproduced in whole or part without the written consent of Musco Lighting. ©1981, 2008 Musco Lighting