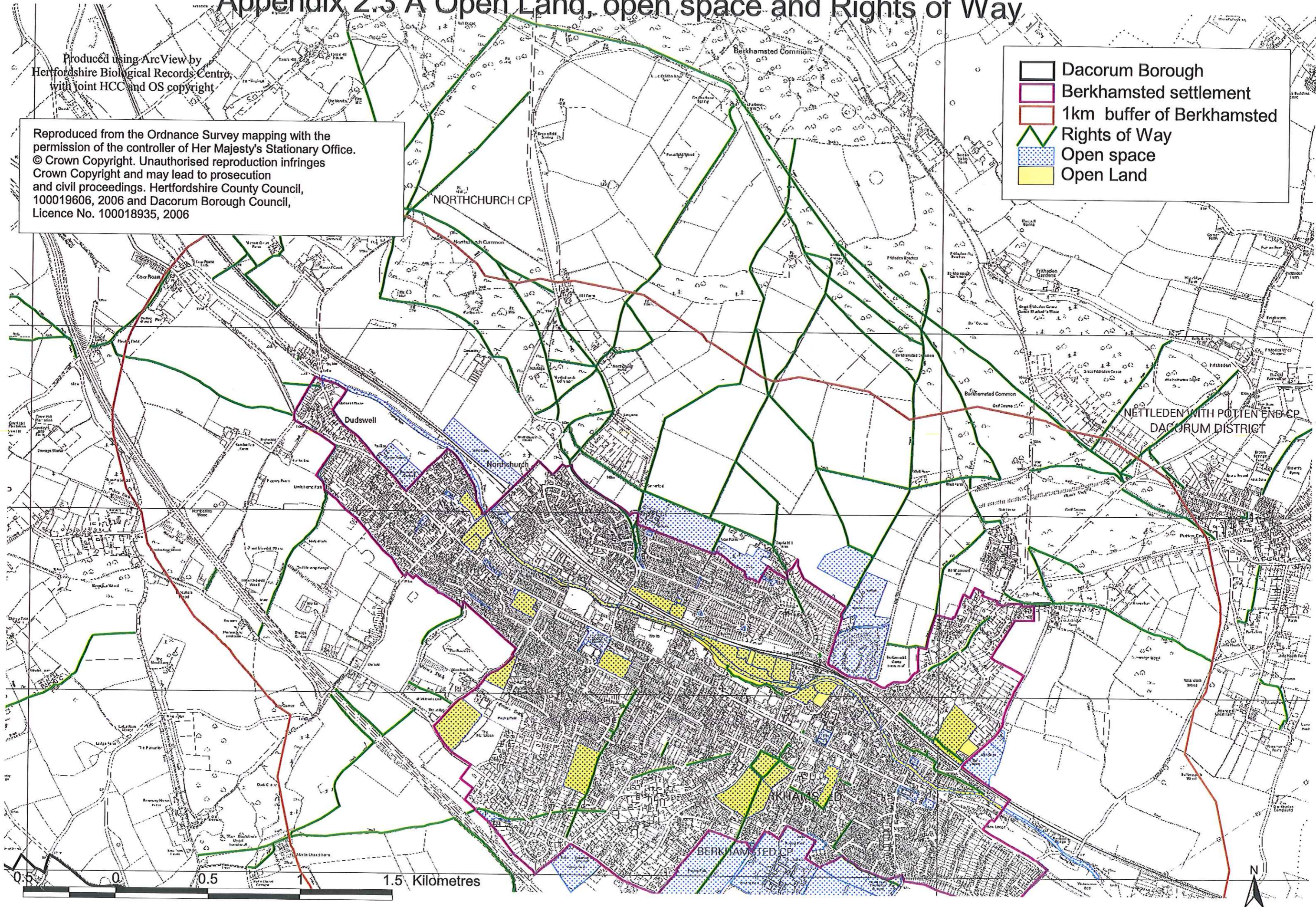


Appendix 2.3 A Open Land, open space and Rights of Way

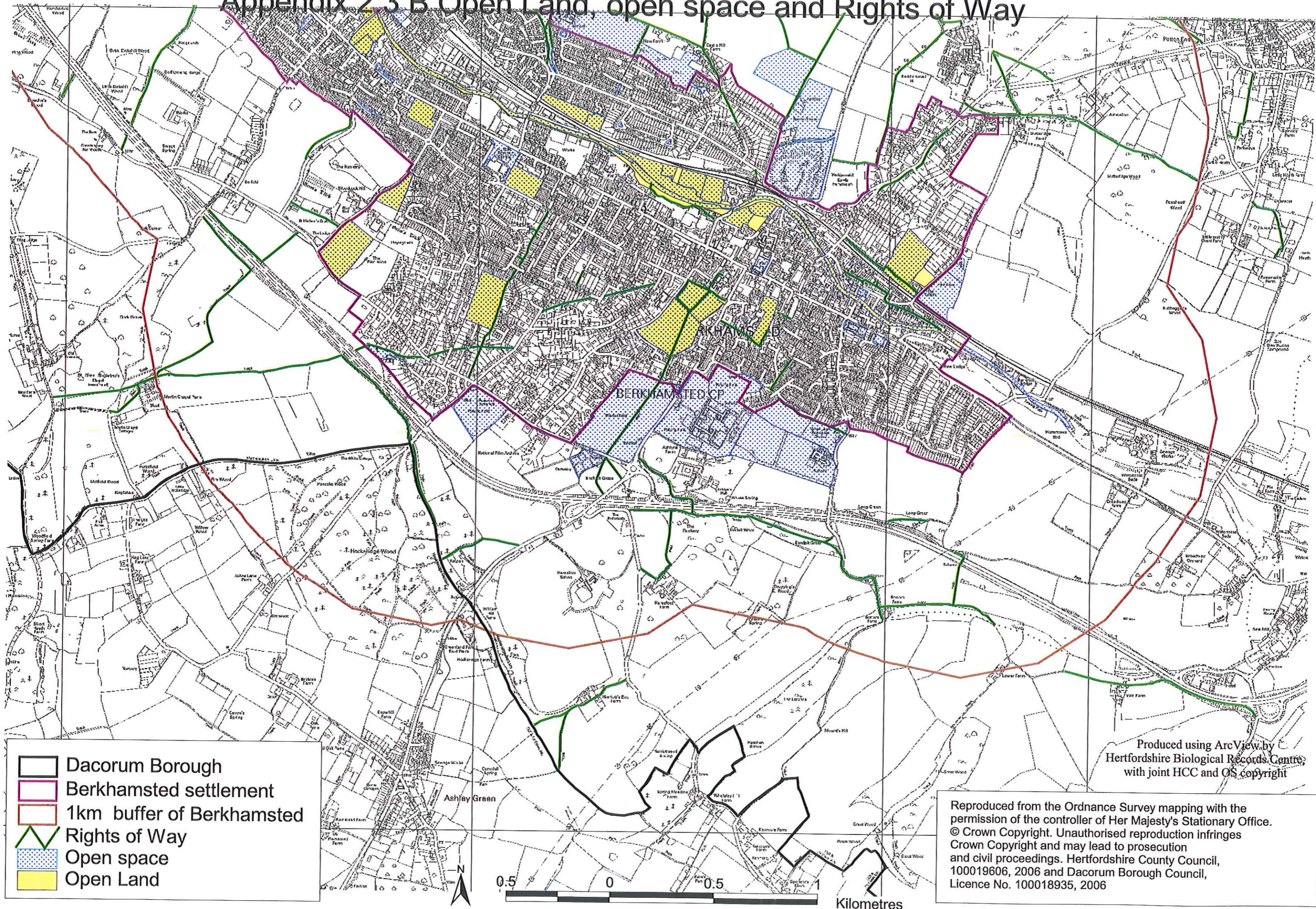
Produced using ArcView by
Hertfordshire Biological Records Centre,
with joint HCC and OS copyright







Reproduced from the Ordnance Survey mapping with the
permission of the controller of Her Majesty's Stationary Office.
© Crown Copyright. Unauthorised reproduction infringes
Crown Copyright and may lead to prosecution
and civil proceedings. Hertfordshire County Council,
100019606, 2006 and Dacorum Borough Council,
Licence No. 100018935, 2006

- Dacorum Borough
- Berkhamsted settlement
- 1km buffer of Berkhamsted
- Rights of Way
- Open space
- Open Land



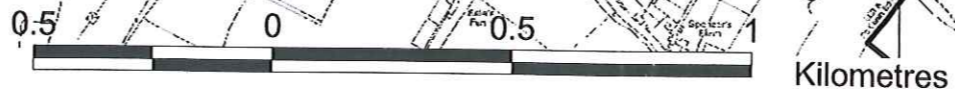
Appendix 2.3 B Open Land, open space and Rights of Way



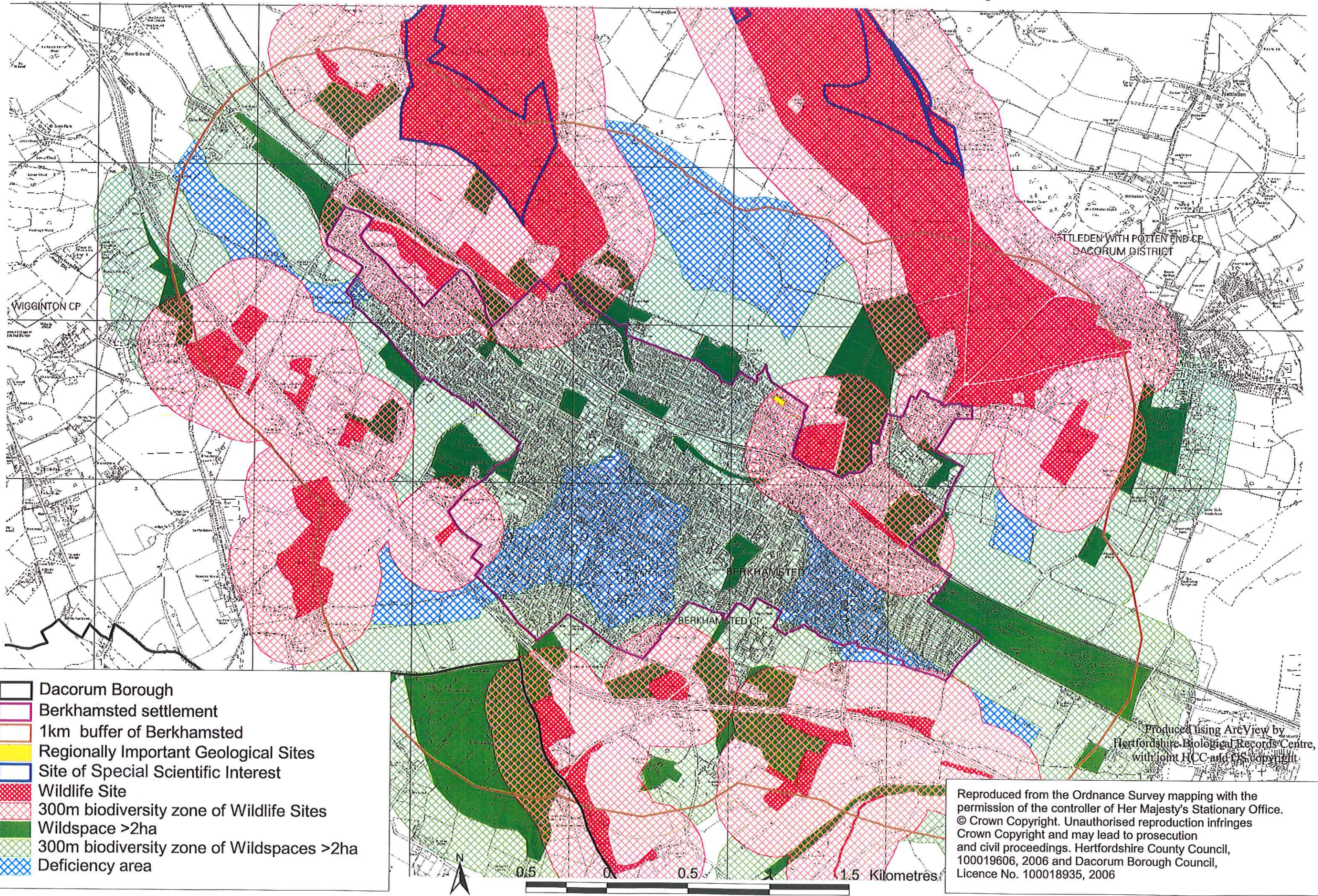
-  Dacorum Borough
-  Berkhamsted settlement
-  1km buffer of Berkhamsted
-  Rights of Way
-  Open space
-  Open Land

Produced using ArcView by
Hertfordshire Biological Records Centre
with joint HCC and OS copyright

Reproduced from the Ordnance Survey mapping with the permission of the controller of Her Majesty's Stationary Office. © Crown Copyright. Unauthorised reproduction infringes Crown Copyright and may lead to prosecution and civil proceedings. Hertfordshire County Council, 100019606, 2006 and Dacorum Borough Council, Licence No. 100018935, 2006



Appendix 2.4 Principal existing biodiversity zones and deficiency areas

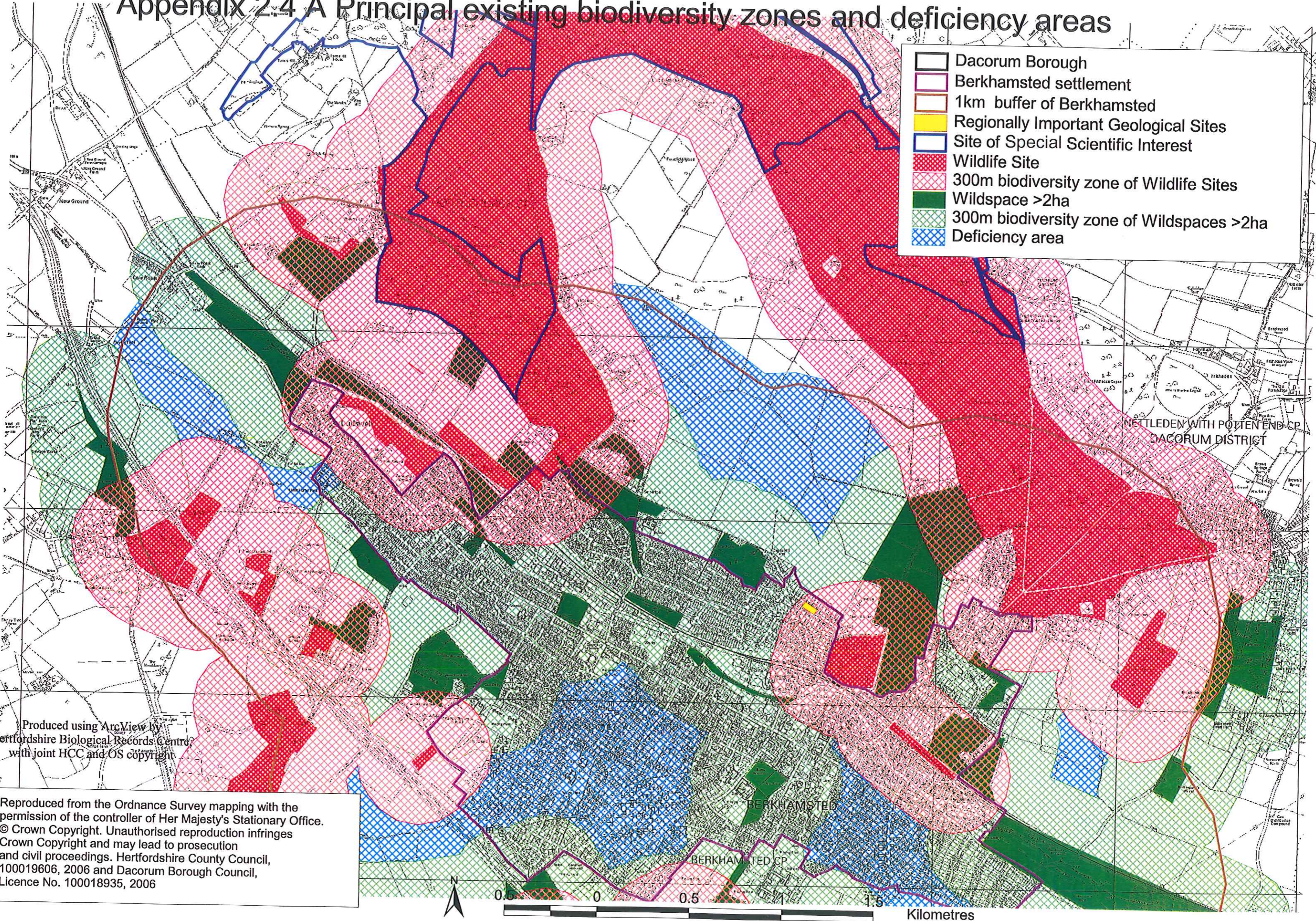


- Dacorum Borough
- Berkhamsted settlement
- 1km buffer of Berkhamsted
- Regionally Important Geological Sites
- Site of Special Scientific Interest
- Wildlife Site
- 300m biodiversity zone of Wildlife Sites
- Wildspace >2ha
- 300m biodiversity zone of Wildspaces >2ha
- Deficiency area

Produced using ArcView by
Hertfordshire Biological Records Centre,
with joint HCC and DC copyright.

Reproduced from the Ordnance Survey mapping with the permission of the controller of Her Majesty's Stationary Office. © Crown Copyright. Unauthorised reproduction infringes Crown Copyright and may lead to prosecution and civil proceedings. Hertfordshire County Council, 100019606, 2006 and Dacorum Borough Council, Licence No. 100018935, 2006

Appendix 2.4 A Principal existing biodiversity zones and deficiency areas



Produced using ArcView by
Hertfordshire Biological Records Centre
with joint HCC and OS copyright

Reproduced from the Ordnance Survey mapping with the permission of the controller of Her Majesty's Stationary Office. © Crown Copyright. Unauthorised reproduction infringes Crown Copyright and may lead to prosecution and civil proceedings. Hertfordshire County Council, 100019606, 2006 and Dacorum Borough Council, Licence No. 100018935, 2006