
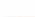







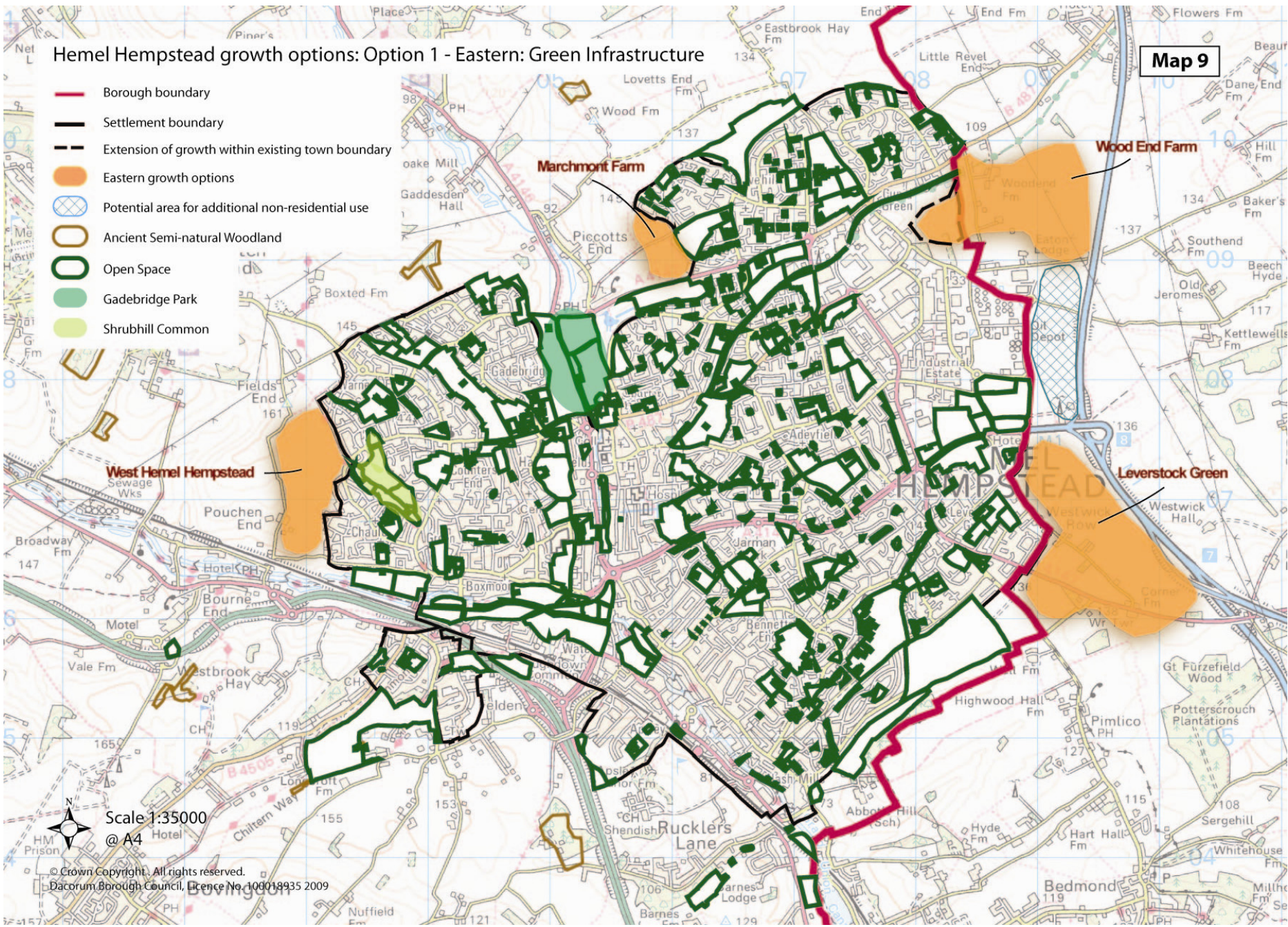


### Hemel Hempstead growth options: Option 1 - Eastern: Green Infrastructure

-  Borough boundary
-  Settlement boundary
-  Extension of growth within existing town boundary
-  Eastern growth options
-  Potential area for additional non-residential use
-  Ancient Semi-natural Woodland
-  Open Space
-  Gadebridge Park
-  Shrubhill Common



Scale 1:35000  
@ A4

© Crown Copyright. All rights reserved.  
Dacorum Borough Council, Licence No. 100018935 2009